



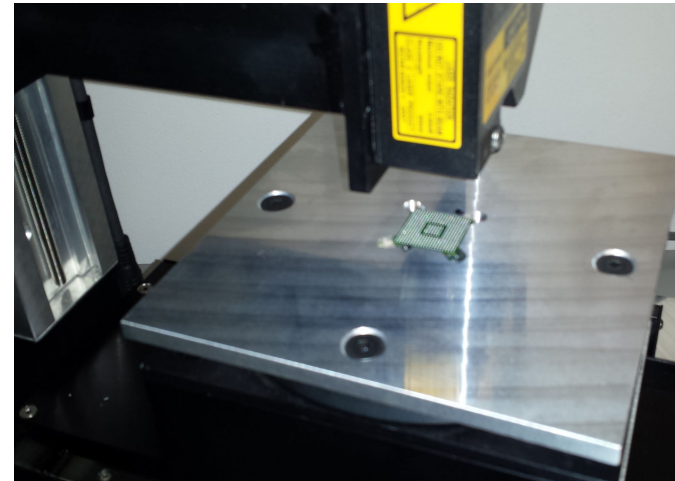
Ball Grid Array Scanner / Small Parts in Tray Application

Fully Automated Scanning

Specs:

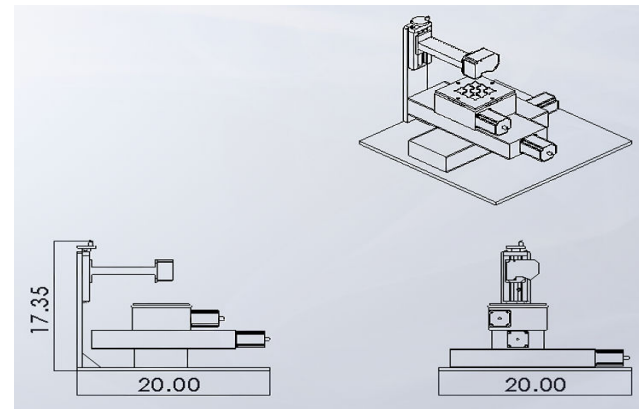
MODEL # CMDBGA-200

X Travel	200mm (8 inches)
Y Travel	200mm (8 inches)
Machine Weight	25kg (55 lbs)
Electrical Requirements	120V
Air/Water Required	None
Sample Size Max	200 x 200mm (8 x 8 inches)
Sample Weight Max	11kg (25lbs)
Resolution X	Depends on ballscrew chosen (typ. 1.25µm)
Resolution Y	Depends on ballscrew chosen (typ. 1.25µm)
Resolution Z	Varies by sensor chosen (typ +/- 5 µm)



Options:

Ultra Precision Ballscrew	(1 mm/rev, 2 mm/rev, & 5 mm/rev)
Rotary options	6" & 8" Diameters (45:1,90:1 & 180:1 ratios available)
X Travel	100 – 600mm (4 – 24 inches)
Y Travel	100 – 600mm (4 – 24 inches)
Larger than 20" (500 mm) travel requires gantry option	
Multiple Sensor Configurations Available	
Standard Sensor	25mm wide Line Laser (800 points in Y)
CLA options	0.14mm-10mm @.01µm resolution
Line Laser options	Standard Line, High Speed Line, & Long Range Line
Alternative Power Options Available	(110/220/230V 50/60 HZ)



Warranty : 1Yr parts/labor. User pays shipping to service center. Return shipping included.